



CSI Controls®



PRODUCT SHOWCASE

www.csicontrols.com





WellZone®

- Provides pressure control for single phase submersible well pump applications
- LCD display with bar graph show system pressure, run status/hours, and pump cycles
- Adjustable pressure set points
- Built-in pump protection, including rapid cycling and dry run
- Includes pressure transducer
- Five-year limited warranty on panel; two-year limited warranty on transducer
- 2-wire and 3-wire models available



RK Series™ Float Control Panels

- Single phase, three phase; simplex, duplex; demand dose, timed dose and capacitor start/run models
- Provides pump control and system monitoring
- Protective inner door features panel operating status indicators, control buttons and provides access to pump/control circuit breakers
- NEMA 4X enclosure rated for outdoor use
- Optional digital display for viewing pump elapsed time, cycle counts and timed dose control



RK Series™ 4-20mA Transmitter Control Panels

- Single phase, three phase; simplex, duplex; demand dose/timed dose and capacitor start/run models
- Provides 4-20mA input for continuous level sensing for pump control and system monitoring
- Protective inner door features panel operating status indicators, LCD display, control buttons and provides access to pump/control circuit breakers
- NEMA 4X enclosure rated for outdoor use
- Designed to work with CS4-20 Transmitter, SLX Transmitter or any other 4-20mA sensing device; 2-float backup control



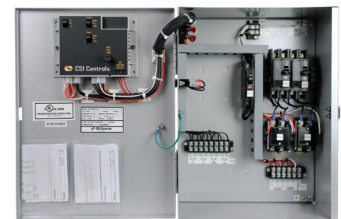
VIP-XR Three Phase Control Panel

- Padlockable NEMA 4X fiberglass enclosure, 18 x 16 x 10 inches
- 208, 230 or 460V 3-phase power input IEC motor starters with interchangeable overload modules up to 32 FLA
- Pump disconnect/overload reset accessible through inner door
- 22mm Hand-Off-Auto controls on inner door
- Supports 1 or 2 float independent backups
- LED alarm beacon
- White painted steel inner door and backplate
- Single-point power connection
- Tri-voltage stepdown control transformer



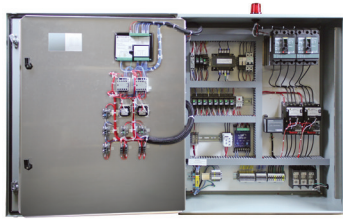
PRO-Grade™ Control Panels

- Designed for commercial applications, including parking garages, hospitals, restaurants, stadiums and more.
- Single phase, three phase; simplex/duplex models available
- Line voltages from 120V to 480V
- Provides low voltage (12 VDC) interfaces for float and other sensors
- Available with optional intrinsically safe float connections
- NEMA 1 and NEMA 4X enclosures available
- 12V remote alarm interface is standard



ACCEL[®] PANEL PROGRAM

- Pre-engineered base models
- Same day quotes
- Self-service quote tool
- 24 hour submittals
- 10 day delivery



(Due to supply chain and labor constraint issues, lead times are as quoted and subject to change based on availability.)

CSION[®] WiFi Alarm

- Provides 24/7 remote notification up to 4 contacts (2 email, 2 text)
- Monitors and reports 2 alarm conditions
- Text/email alerts; alarm 1, alarm 2, power lost, power restored, low temperature, low battery, alarm offline
- Large push test/silence button with LED light ring
- Excellent solution for areas with poor cellular service
- No monthly fees; easy to install
- Non-WiFi model available



U.S. Patent No.
D874,960



Fusion[™] Three Phase Control Panel

- Simplex and duplex models
- NEMA 4X engineered thermoplastic enclosure with lockable cover
- Flashing red 360° alarm beacon with an electronic horn, and test/silence switch
- Pump Hand-Off-Auto switches to manually activate a pump, set in automatic float level control, or disable the pump operation
- Pump Run lights to provide visual notification when the pumps are called to run
- DPC-4F Pump Controller



CSION[®] RF Alarm

- Wireless technology connecting an outdoor control panel to an CSION[®] or CSION[®] WiFi alarm
- Up to 200 ft. communication range
- LED indicators for signal strength (green) and alarm (amber)
- Lost communication alarm
- NEMA 4X configurations available for standard and WiFi models
- WiFi model includes CSION[®] WiFi alarm, RF receiver module, and RF panel model; provides 24/7 notification (2 emails, 2 SMS text) to smart device of potential conditions



CSION[®] 3R Indoor/Outdoor Alarm

- 2-color molded enclosure offers a distinct look; upper translucent half illuminates in alarm condition
- Available with red LED or yellow LED alarm indication
- Removable lower cover provides greater access for easier field wiring while the internal circuitry remains protected
- Enclosure meets Type 3R water-tight standards
- Alarm system (when installed on separate circuit) operates even if pump circuit fails
- Automatic alarm reset, horn silence switch, and alarm test switch
- Green power on indicator
- Includes auxiliary alarm contacts for easy attachment of remote devices OPTIONS



U.S. Patent Nos.
8,737,672 and
D695,640



CSION[®] 4X Alarm

- NEMA 4X enclosure rated for indoor and outdoor use with latching lockable cover and external mounting feet
- Automatic alarm reset
- Unique C-style red flashing beacon powered by super bright LEDs for 180° visibility, even in direct sunlight
- External Alarm Test/Silence switch
- Battery backup input terminals
- Includes auxiliary contacts
- Patent Pending
- UL/cUL Listed



Speed-E Connect™ Float Connection System

- Quick and easy installation of up to 4 float switches
- Speed-E Connect™ manifold features 3 or 4 quick release float switch connection ports
- Housing includes color identification system that match cable wire pairs for easy field identification
- Sealing plug(s) available for unused port(s)
- Designed for use with Speed-E Connect™ float switches
- 3 and 4-port models available



US Patent No.
9,559,455 and
9,583,867

Foreign patents
pending

Control Duty Extra Large Control Switch

- Designed for level control in municipal water and sewage applications
- Excellent solution for applications with high grease content
- Two-color float housing offers easy identification of float position
- Mechanically-activated, internally weighted
- 3 wire cable – SPDT (Single Pole, Double Throw) can be wired as normally open or normally closed



SLX Transmitter

- Provides continuous level monitoring in the harshest environments
- Measures hydrostatic pressure of liquid above sensor and outputs a 4-20mA signal
- Reliable low maintenance solution for critical level control applications
- Suitable for operation in Class 1, Div 1, Groups C, D, T4 hazardous locations with appropriate intrinsic safety barrier
- Rugged non-conductive transmitter housing provides superior electrical surge isolation from measured liquid
- Reverse polarity protected
- Color coded 18/2 shielded cable with vent tube
- Multiple ranges and cable lengths
- 2-year limited warranty



US Patent
8,336,385



CSI Controls®

Toll Free: 888-342-5753

Fax: 218-847-4617

customer.service@sjeinc.com

www.csicontrols.com